

The background is a vibrant mural on a brick wall. It features a large, stylized zebra head in black and white stripes on the left, a bright yellow and orange sun or moon in the upper right, and a black silhouette of a person's arm and hand reaching up from the bottom left. The Coreo logo, consisting of two overlapping circles (one dark teal, one light teal) with the word 'Coreo' in white, is centered over the mural.

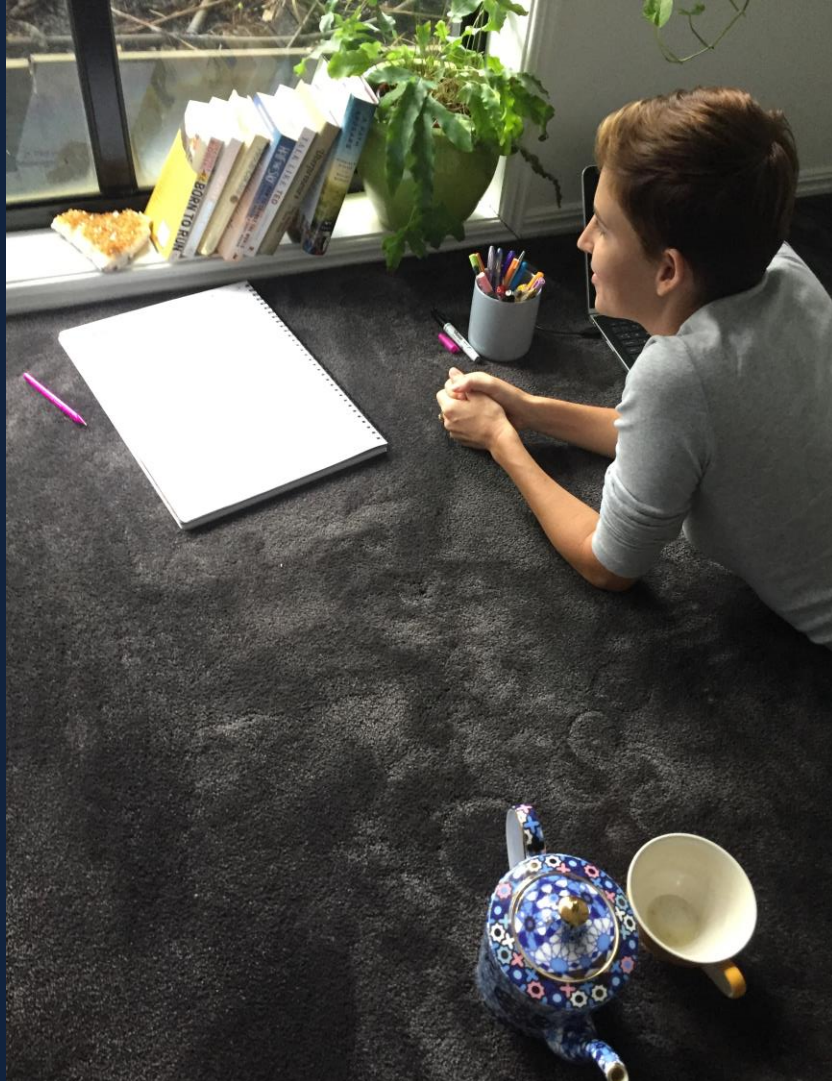
Coreo



# Circular economy principles

- Design out waste and pollution
- Keep materials and products circulating at their highest value
- Regenerate natural systems







Ocean Street

56 small  
businesses:

- 6 retail
- 31 service
- 19 hospitality

- Resource efficiency
- Reverse logistics
- Incentivised return
- Asset management
- Servitisation
- Innovative technology





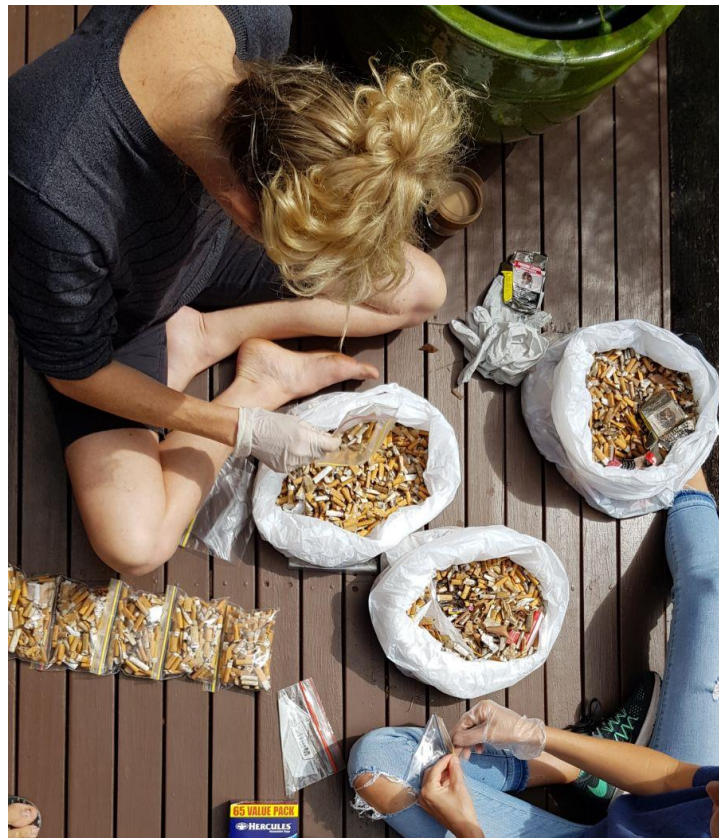
- Coffee waste diversion
- Food waste to compost
- Spare harvest initiative
- Partnerships with Food and Agri business network
- Soft plastics recycling initiative
- 70% diversion from landfill target
- Cost benefit analysis of options to reduce electricity
- Commercial scale renewables
- Water refill station
- QLD first B2B asset sharing platform



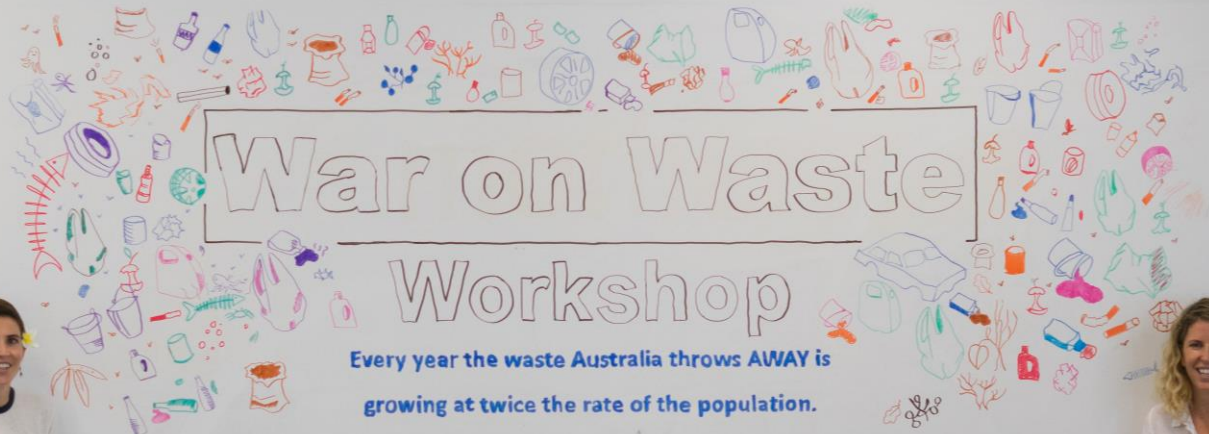
- Reverse logistics for packaging project
- Food miles study
- Cigarette butt litter campaign
- Swap plastics for alternatives
- Bin sensors
- Electricity monitors
- Community owned internet
- Art as education
- War on waste workshop
- Monthly education segments on ABC











FIND THE CIRCULAR EXPERIMENT  
ON FACEBOOK FOR MORE  
DETAILS.

But where  
is away?



COME TO SPARK BUREAU ON  
THURSDAY 14<sup>TH</sup> AT 5.30-  
6.30PM TO FIND OUT!













THE  
**CIRCULAR**  
*experiment*







# Our Journey

Pilot project

2017



QUEENSLAND  
TREASURY  
CORPORATION





Queensland  
Government

Minister for Environment and the Great Barrier Reef

Minister for Science

Minister for the Arts

**The Honourable Leeanne Enoch**





celab

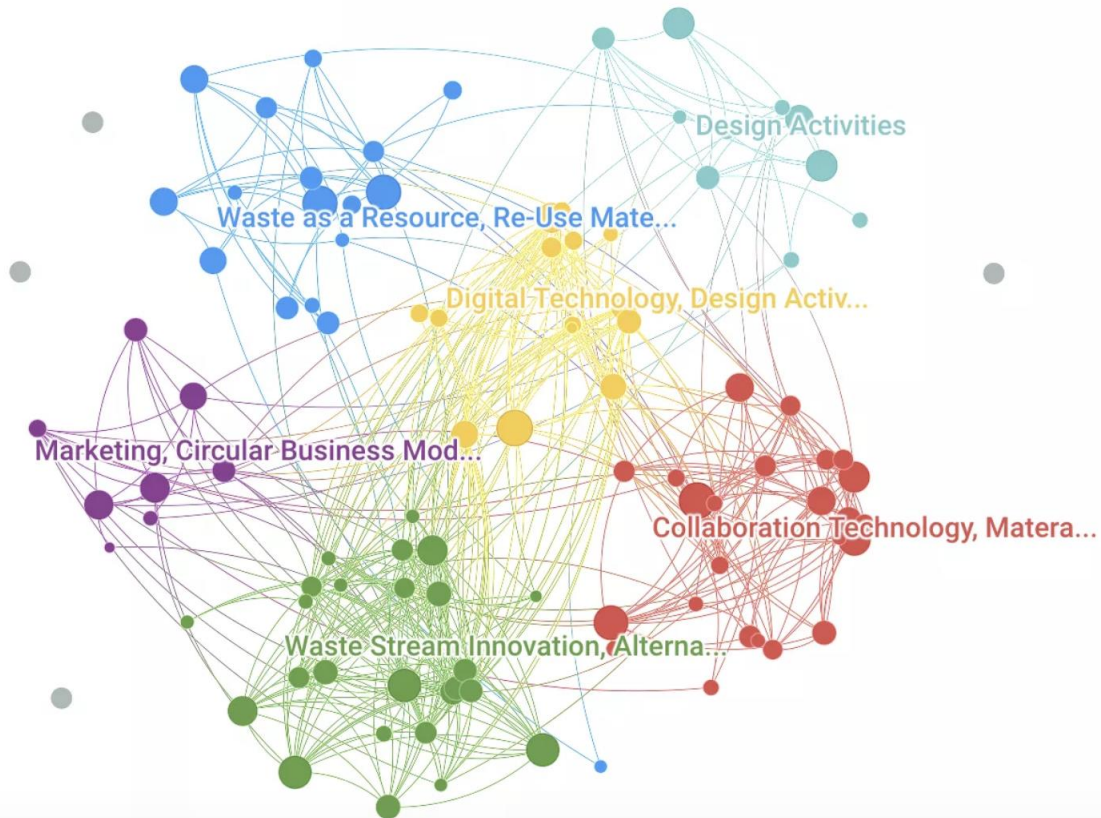




# The Key Clusters of the Circular Economy Network



Powered by LEO



# Securing the digital-physical supply chain



RioTinto



EVERLEDGER



# The benefits



**Create jobs  
and help local  
communities**



up to

**95%**

**less energy requirements  
compared to virgin  
materials processed**



**Substantial  
reduction in carbon  
dioxide emissions  
compared to virgin  
materials processed**

Co-innovation for sustainable recycling in Australia

# Intelligent Communities



***Fisher & Paykel***



THE SOLUTION

# Kitchen as a Subscription

An exciting concept that allows anyone to gain access to the most energy efficient kitchen applications at a very low subscription cost.

## Get your new kitchen as a subscription!

Afford your dream kitchen and become part of a circular community that's saving money and empowering household sustainability

**\$2**  
a day

REGISTER YOUR INTEREST TODAY!



### No surprises

We offer predictive and competitive pricing. No more bill shock.



### Cost effective

Save money on your home energy bills with appliances as a platform.



### Peace of mind

We look after everything. No more broken appliances or delayed repairs.

# New ways to pack things



**Why us? Why now?**

**Feed Ingredients**  
Carbohydrates, Protein  
Lipids, Minerals, Vitamins,  
and Additives

**Feed Mills**

**Breeder Farm**

**Hatchery**

**Broiler Farm**

**Primary & Further Processing**  
INGHAM'S

**Distribution to Customers**

**PHA Bioplastic Film**

**Crop Farms**  
Wheat, Barley, Soybean, Linseed,  
Corn, Rice, Sunflower, Peas,  
Sorghum, Oats, Canola, Pulse.

**Compost Facility**  
suez

**Landfill Fermentation Facility**  
Bacteria

**Film & Packaging Facility**

**Grains, Vegetable Protein, Vegetable Oils**

**Bacterial Protein & Cell solids (~Distillers Dry Grains with Solubles)**

**Polyhydroxyalkanoates (PHA Resin) [Compostable Plastic Feedstock]**

**SUSTAINABLE DEVELOPMENT GOALS**  
12 RESPONSIBLE CONSUMPTION AND PRODUCTION

**FIGHT FOOD WASTE Cooperative Research Centre**  
REDUCE - TRANSFORM - ENGAGE

## Film & Packaging Facility

# Circular and certified spaces

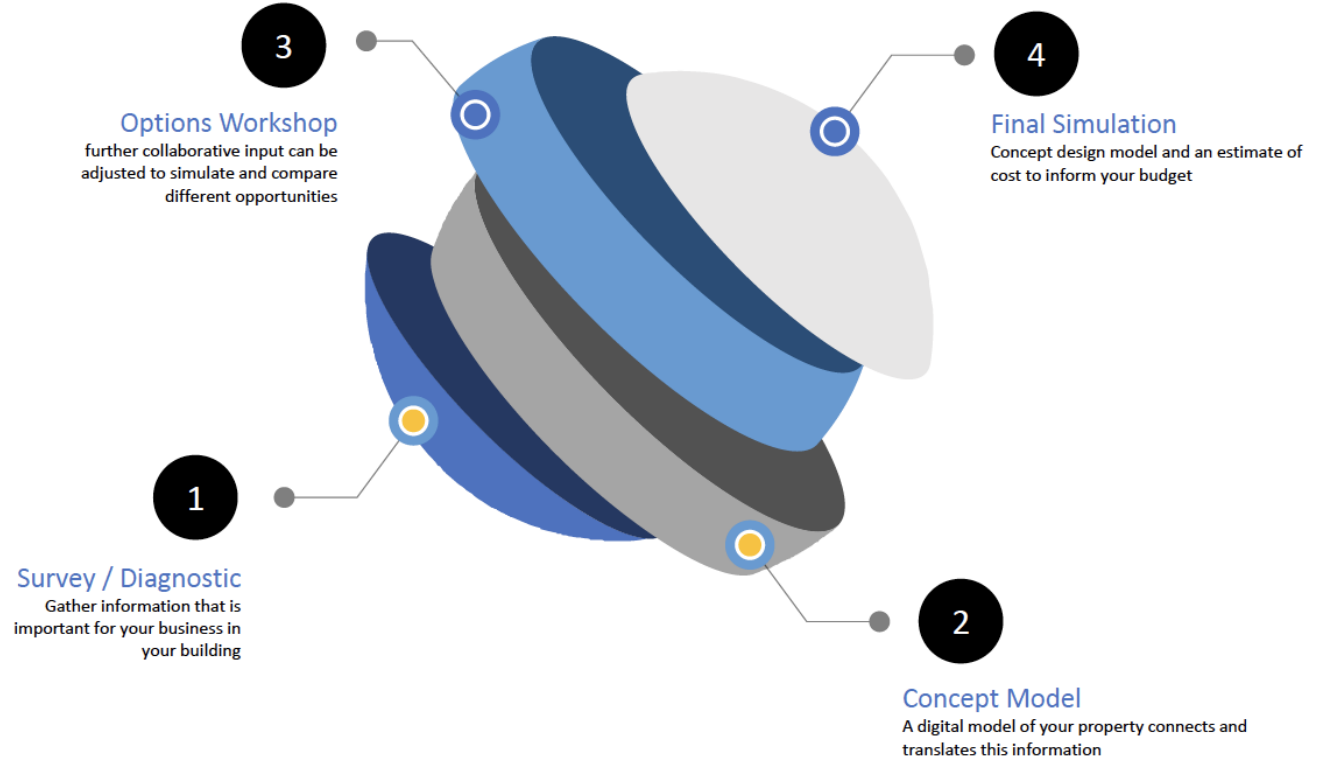


EARTHCHECK



# C-Suite

## How it works





## **Philippa Sjoquist, the Principal Advisor – Strategic Planning with Rio Tinto Growth & Innovation**

“The Lab was a unique opportunity for collaboration across different industries to innovate practical, sustainable solutions that will benefit Queensland. We’re proud to have been part of Australia’s first Circular Economy lab and of the role that Boyne Smelter has in delivering the team’s concept for recycling aluminium locally rather than sending this renewable metal to another country.”

**TELEPHONE**

A: 0419 434 485  
J: 0413 236 750

**ADDRESS**

LEVEL 25, ENERGY LABS,  
CEFC 71 EAGLE STREET,  
BRISBANE CITY, 4000 QLD

**WEB**

ashleigh@coreo.com.au  
jaine@coreo.com.au  
WWW.COREO.COM.AU

**Unless someone like you cares a whole awful  
lot, nothing is going to get better. It's not.**

- DR. SEUSS, THE LORAX