

SIMPSON STREET DRAINAGE STAGE 2

Luke Coughlan
Manager Infrastructure Services Warrnambool City Council
Contract Superintendent



www.warrnambool.vic.gov.au

Connect to Council





WARRNAMBOOL
CITY COUNCIL

Warrnambool is located on the native lands of the Maar nation and
translated means

place between two rivers



www.warrnambool.vic.gov.au

Connect to Council



CONTENTS

- Aim
- Why is maintenance important in design?
- Project Background
- Design considerations
- Developed Conditions Fly Over
- Special design considerations for maintenance

AIM

- Divert catchment away from ageing and under capacity Simpson Street Tunnel to protect infrastructure
- Provide drainage infrastructure and flood mitigation to developing area of Warrnambool
- Provide stormwater harvesting option for the Racecourse

DESIGN AND MAINTENANCE

- Different ways to design infrastructure
- Great engineering design and construction
- Failure in performance
- Maintenance practicalities and capabilities

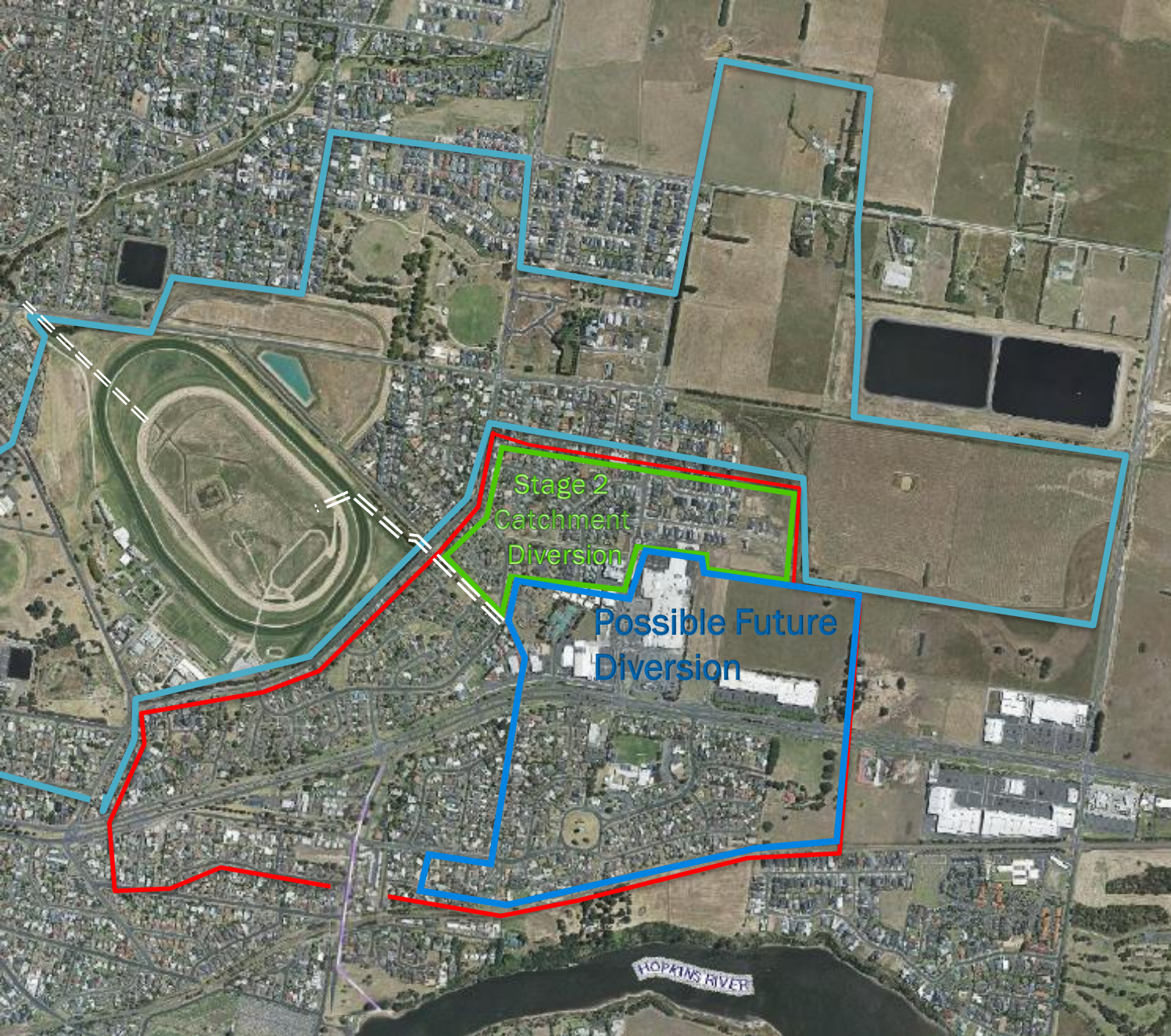
BACKGROUND



www.warrnambool.vic.gov.au

Connect to Council



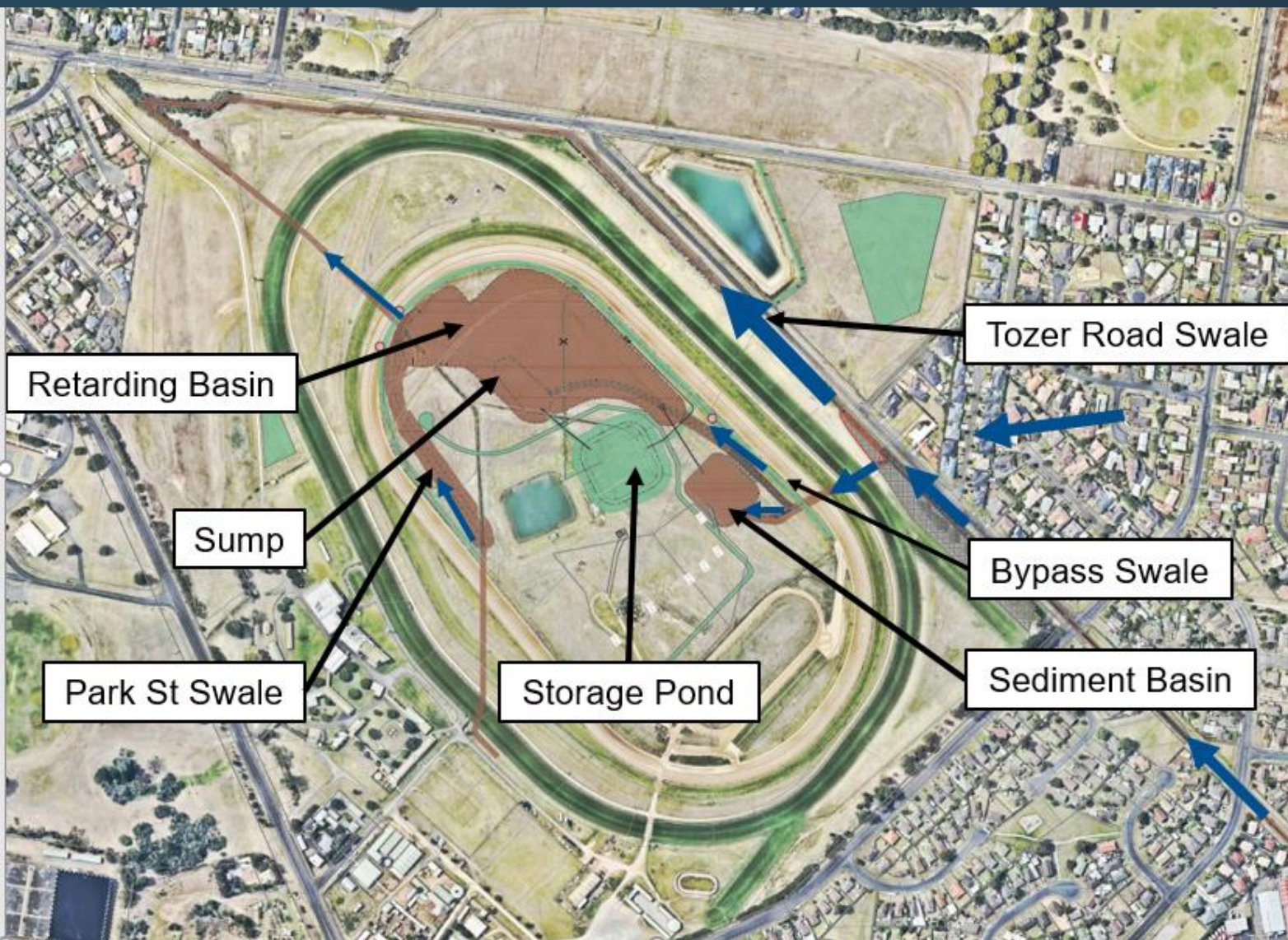


Stage 2

- Diversion of 24 Ha
- Diversion Drain
- Sedimentation Basin
- Retardation Basin
- Storage dam

Possible Future Works

- Extend Diversion drain to Highway
- Expand Retardation Basin
- Upgrade Outfall to Russell Creek



- Retarding basin to cater for existing catchment plus 24ha diverted catchment
- Diversion of runoff towards the retarding basin via pit and pipe
- The flowrate up to 10%AEP will be diverted towards the retarding basin
- The flowrate higher than 10% AEP will be directed to the Tozer Road channel
- Sediment basin will cater for the flow up to 3mnts (95% AEP)
- Higher flow, up to 10% AEP will be directed to the Retarding Basin
- The existing outlet will cater for the flow discharging from Park Street drainage system and the Retarding Basin



www.warrnambool.vic.gov.au

Connect to Council



PROCUREMENT

- External delivery through competitive Tender
- Procurement designed to encourage local participation and upskilling of Contractor
- Initial cost estimate outside budget. VfM exercise resulted in decreased retarding basin size with ability to enlarge in the future
- 5 Tenders submitted
- Award to local Contractor, McKinnon Quarries & Civil
- Winning tender not lowest cost

CONSTRUCTION (*ongoing*)

Warrnambool City Council Team

- Scott Cavanagh – Principal (*Director City Infrastructure*)
- Luke Coughlan – Superintendent (*Manager Infrastructure Services*)
- Rohan McKinnon – Project Manager (*Senior Engineer*)
- Abel Farrell – Construction Inspector (*Team Leader*)



28th November 2018

- Bulk of earthworks completed over summer
- Management processes and work times to allow continued track work and race events (work hours 9am – 7pm)

6th December 2018

- Track crossing works completed early to allow time for re-establishment of turf before use in April
- Multiple disused drainage lines discovered, and six instances of asbestos internal to the track



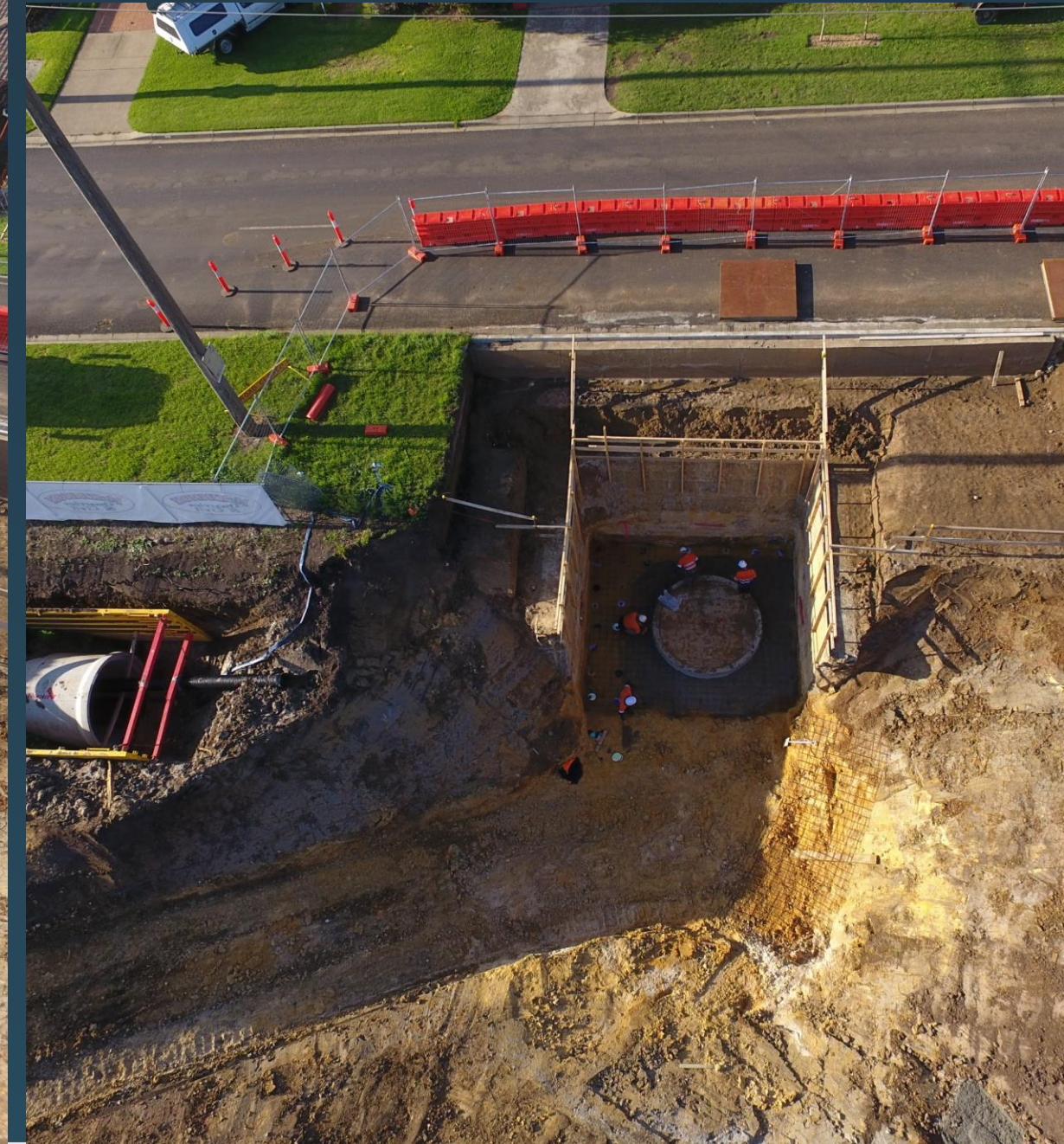


- Material from the centre of the track was landscaped into two areas around the racecourse
- Cost prohibitive if material could not be accommodated in these locations



GPT Issues

- GPT required 8 m excavation 2 m from edge of road pavement
- Moved upstream slightly to avoid power pole
- In ground reinforced retaining wall needed to be designed and constructed specifically to protect excavation



www.warrnambool.vic.gov.au

Connect to Council





22nd March 2019

- Progress
- Rock beaching and overflow from sediment basin



14th May 2019

- Landscaping finished prior to May race carnival
- Carnival is a significant draw card for the city and it was a relief that the works progressed to a point where they did not impact the carnival



22nd August 2019

Current status:

- internal track works complete
- Connection to divert catchment in the next month
- Initial water quality testing results received and being assessed

BUDGET

Description	Budget (Ex GST)	Amount (Ex GST)
Simpson St Stage 1 Tunnel Relining	\$2,250,000	\$1,990,000
Simpson St Stage 2 Racecourse Civil Works	\$4,750,000	\$4,450,000
Total	\$7,000,000	\$6,440,000

Cir 1925



www.warrnambool.vic.gov.au

Connect to Council



2019



www.warrnambool.vic.gov.au

Connect to Council





Special Thanks

- Rohan McKinnon – Project Manager
- Abel Farrell – Construction Inspector and Drone Operations Expert

